



TYPICAL

GC202-D2

**MEDIUM & HEAVY DUTY BOTTOM FEED
LOCKSTITECH SEWING MACHINE WITH AUTOMATIC
THREAD TRIMMER**

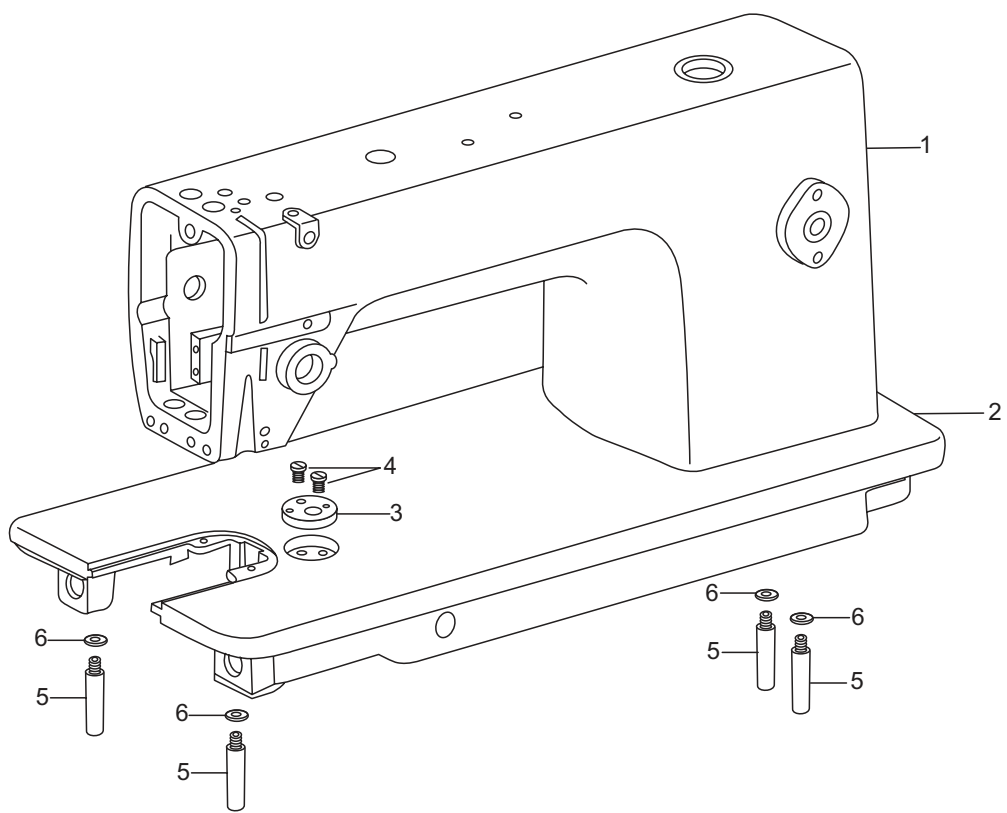
PARTS MANUAL

- Please don't adjust and repair the machine by non-professionals, except adjusting stitch.
 - Specifications subject to change without notice
-

CONTENT

1. Machine body	1-2
2. Needle bar and thread take-up mechanism	3-4
3. Presser foot mechanism	5-6
4. Feed mechanism	7-10
5. Rotating hook mechanism	11-12
6. Lubrication	13-14
7. Threading mechanism	15-16
8. Thread trimmer mechanism	17-20
9. Reverse mechanism	21-22
10. Tension releasing mechanism	21-22
11. Synchronizer.....	23-24
12. Reverse switch mechanism	23-24
13. Accessories	25-26

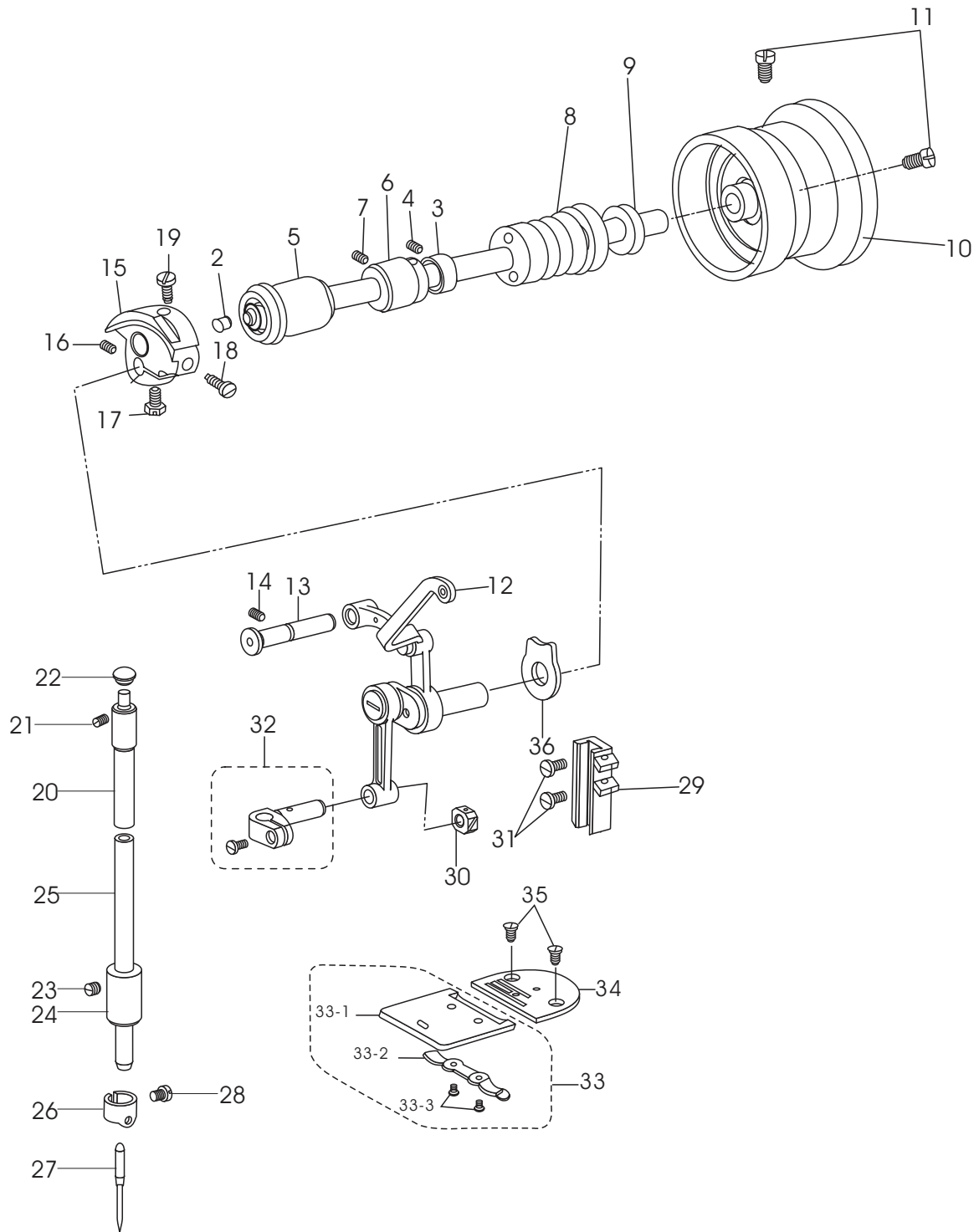
1. Machine body



1.Machine boby

No .	Parts No .	Name of parts	Qty.	Remarks
1	24WF1-001	Arm	1	
2	2KT2-001	Bed	1	
3	7WF4-005	Holder	1	
4	1WF3-025	Screw	2	
5	7WF-4013	Bed leg	4	
6		Washer	4	GB93-76-6

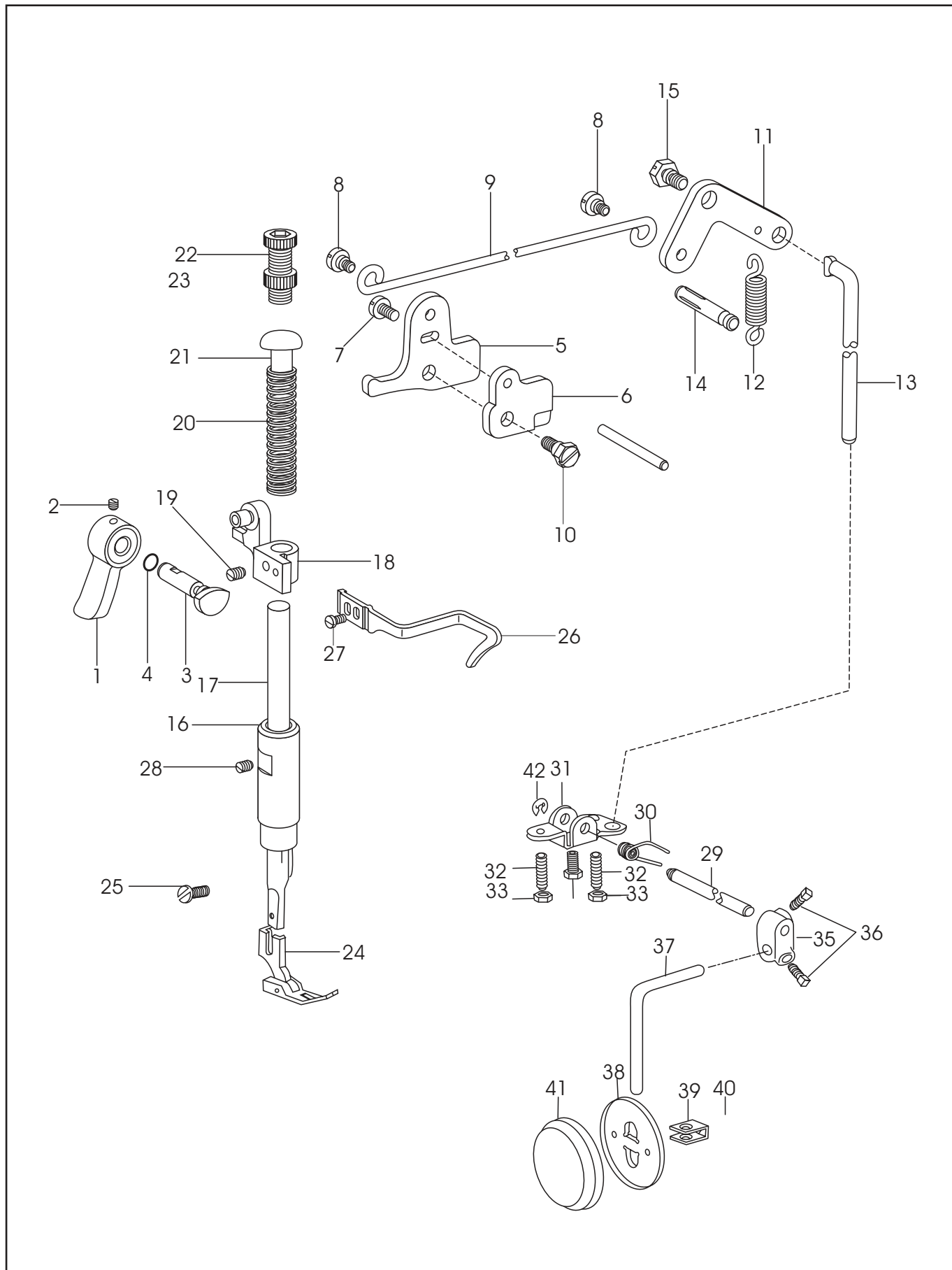
2. Needle bar and thread take-up mechanism



2. Needle bar and thread take-up mechanism

No .	Parts No .	Name of parts	Qty.	Remarks
1	4WF1-001A	Upper shaft	1	
2	22T3-001A2	Rubber plug	2	
3	22T3-002B1	Collar	1	
4	22T3-002B2	Screw	2	
5	4WF1-006A	Front bushing	1	
6	4WF1-002	Middle bushing	1	
7	J0.0.40	Screw	1	
8	2KT1-004	Bushing(right)	1	
9	2KT1-005	Oil seal assembly	1	
10	2KT1-006	Balance wheel	1	
11	2KT1-007	Screw	2	
12	33T1-004B	Thread take-up lever assembly	1	
13	33T1-002	Hinge shaft	1	
14	J0.0.40	Screw	1	
15	4WF1-007A	Needle bar crank	1	
16	33T1-006C3	Screw	1	
17	22T2-005B3	Set screw	1	
18	33T1-0062	Screw	1	
19	61-04-01/B2	Set screw	1	
20	22T2-008	Bushing(up)	1	
21	J0.0.35	Screw	1	
22	22T2-011	Rubber plug	1	
23	2KT1-002	Bushing(down)	1	
24	22T2-013	Screw	1	
25	2KT1-001	Needle bar	1	
26	22T2-015	Thread guide	1	
27		Needle	1	
28	22T2-017	Screw	1	
29	2KT1-003	Sliding block groove	1	
30	33T1-013	Sliding block	1	
31	22T2-019	Screw	2	
32	33T1-015H	Needle bar connector	1	
33		Sliding plate assembly	1	
33-1	7WF4-006	Sliding plate	1	
33-2	20T1-013F2	Spring	1	
33-3	20T1-013F3	Screw	2	
34	2KT2-003	Needle plate	1	
35	22T1-020	Screw	2	
36	33T1-005	Spacer	1	

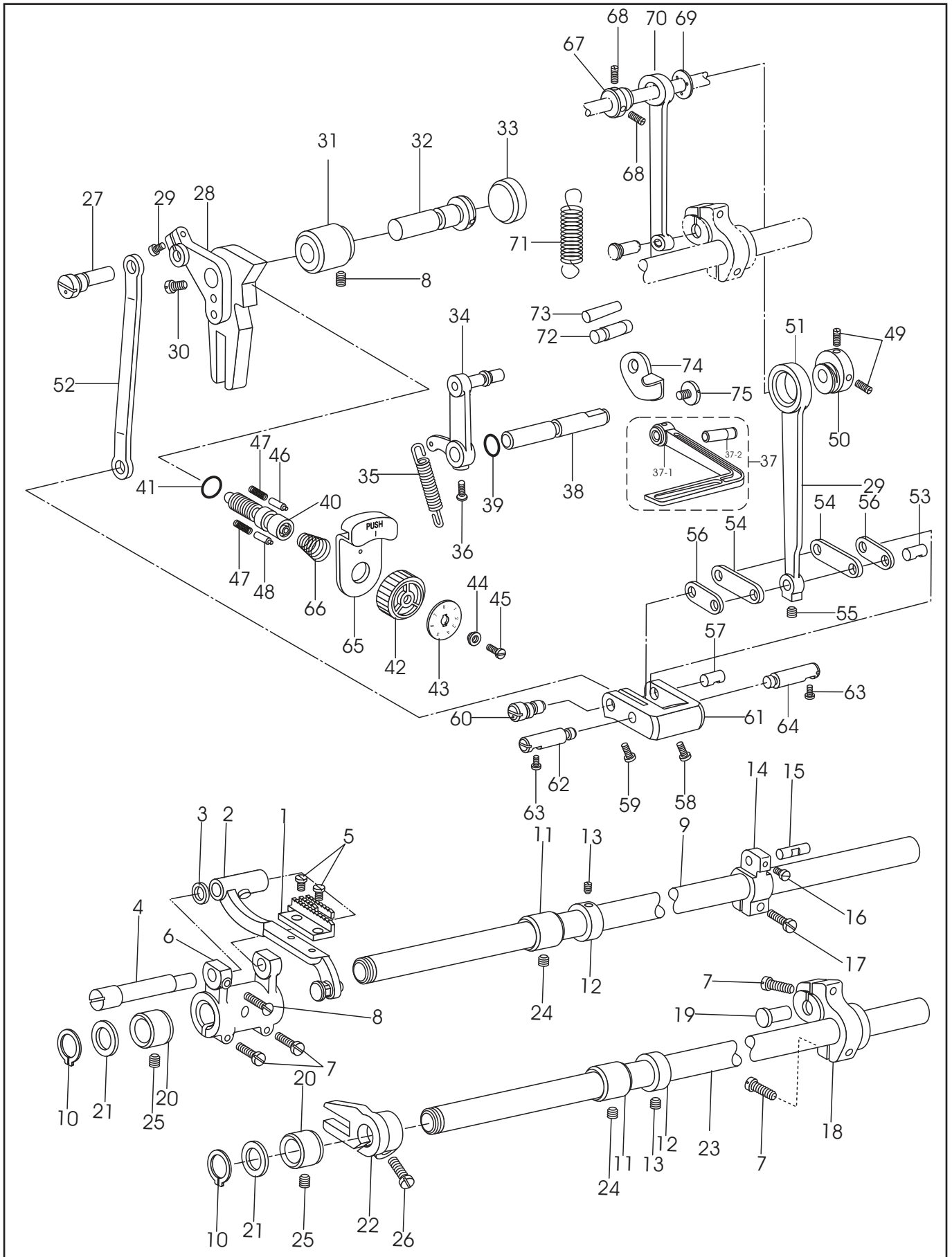
3.Presser foot mechanism



3.Presser foot mechanism

No .	Parts No .	Name of parts	Qty.	Remarks
1	34T3-304	Presser bar lifter	1	
2	22T7-001A2	Screw	1	
3	4WF3-002	Cam	1	
4		Oil seal	1	8 1.9 GB123-76
5	22T7-004B1a	Knee lifter lever (left)	1	
6	2KT4-001	Thread releasing cam	1	
7	22T7-004B10	Screw	1	
8	22T7-004B2	Screw	1	
9	1KT4-004	Connecting rod	2	
10	22T7-005A	Screw	1	
11	22T7-007c1	Knee lifter lever(right)	1	
12	22T7-007c2	Spring	1	
13	4WF3-001	Link	1	
14	22T7-008	Pin	1	
15	22T7-005B	Screw	1	
16	34T3-305	Bushing	1	
17	34T3-303	Presser bar	1	
18	22T7-011D1	Guide bracket	1	
19	61-04-01/B308	Screw	1	
20	20T4-002	Spring	1	
21	22T2-012	Guide column	1	
22	1KT4-001	Screw	1	
23	1KT4-002	Locking nut	1	
24	22T7-017F	Presser foot assembly	1	
25	22T7-015	Screw	1	
26	7WF3-002	Thread guide	1	
27	22T2-004	Nut	1	
28	22T2-013	Screw	1	
29	2KT9-004	Hinge shaft	1	
30	22T9-001A7	Spring	1	
31	22T9-001A8	Stopper bracket	2	
32	22T9-001A9	Screw	2	
33	22T9-001A10	Nut	1	
35	2KT9-005	Screw	1	
36	22T9-003B3	Bent bar connector	2	
37	22T9-003B4	Nut	1	
38	22T9-003B2	Bent bar	1	
39	1KT5-005	Bell	1	
40	22T9-003B6	Bracket	1	
41	22T9-003B7	Screw	1	
42	1KT5-006	Cover	1	GB896-76
		Split retainer	1	

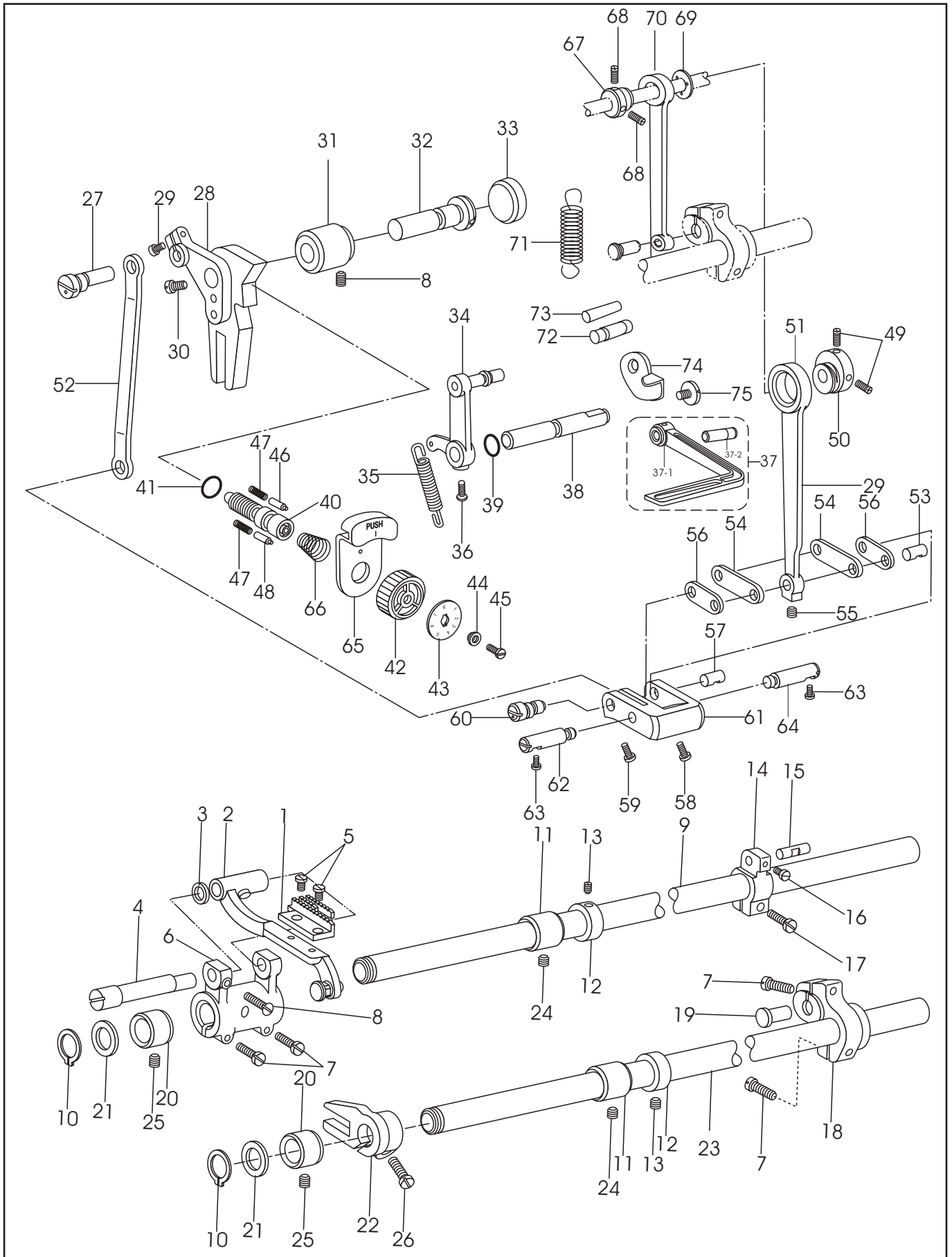
4.Feed mechanism



4.Feed mechanism

No .	Parts No .	Name of parts	Qty.	Remarks
1	2KT3-001	Feed dog	1	
2	36T4-001A1a1	Feed dog support assembly	1	
3	51T-5-001A6	Washer	1	
4	36T4-001A2	Eccentric shaft	1	
5	J0.0.50	Screw	2	
6	4WF2-002	Crank	1	
7	J0.0.71	Screw	4	
8	22T2-019	Screw	1	
9	7WF2-004	Feed shaft	1	
10		Elastic retainer	2	15 GB894-76
11	7WF2-003	Middle bushing	2	
12	22T3-002B1	Collar	2	
13	22T3-002B2	Screw	4	
14	4WF2-006	Crank(right)	1	
15	82T2-003C1a10-2	Stud	1	
16	36T5-008E5	Screw	1	
17	22T6-008D3	Screw	1	
18	4WF2-003	Rear crank	1	
19	22T6-007	Hinge shaft	1	
20	7WF2-002	Front bushing	2	
21	51T5-013	Washer	2	
22	36T4-018H1D1	Fed dog lift fork	1	
23	7WF2-001	Shaft for feed dog lift fork	1	
24	J0.0.35	Screw	2	
25	J0.0.40	Screw	2	
26	22T6-008D4	Screw	1	
27	36T5001	Link pin	1	
28	4WF2-005	Stitch length bracket	1	
29	22T6-008D3	Screw	1	
30	22T5-010D4	Screw	1	
31	1KT3-001	Bushing	1	
32	22T5-004	Shaft for stitch length bracket	1	
33	36T5-003	Rubber plug	1	
34	7WF2-009	Reverse feed shaft crank assembly	1	
35	1KT3-002	Spring	1	
36	22T5-013	Screw	1	
37	2KT3-03	Reverse feed lever assembly	1	
37-1	2KT3-003a	Reverse feed lever	1	
37-2	2KT3-003b	Pin	1	
38	2KT3-002	Pin shaft	1	
39		O-type ring	1	10 1.9 GB1235-76
40	36T5-007D1	Screw bolt	1	
41		O-Type rubber ring	1	14 2.4 GB1235-76
42	36T5-007D2	Dial cup	1	

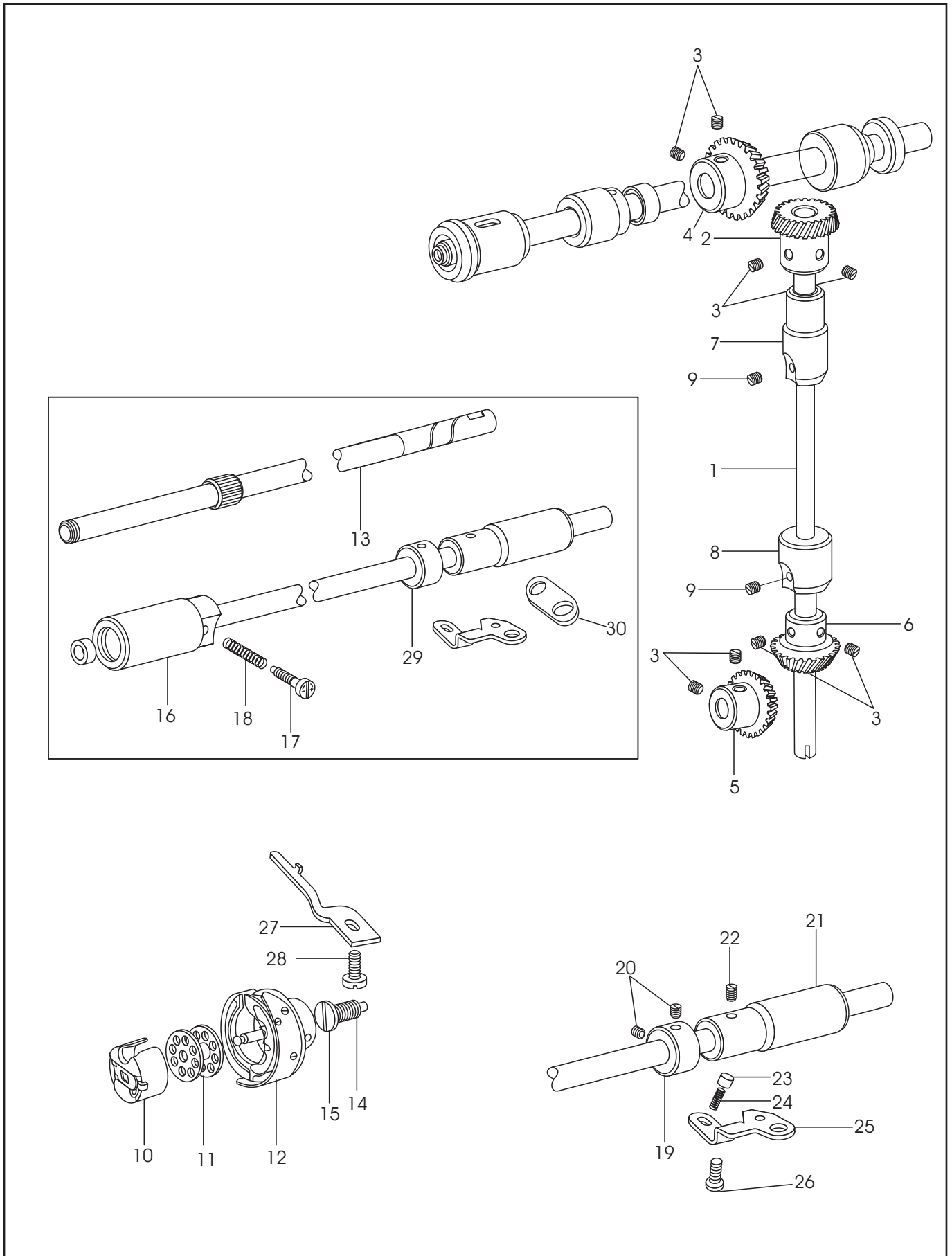
4.Feed mechanism



4.Feed mechanism

No .	Parts No .	Name of parts	Qty.	Remarks
43	7WF2-007	Dial face	1	
44	36T5-007D4	Bushing	1	
45	36T5-007D5	Screw	1	
46	36T5-012	Stop pin	1	
47	22T5-009	Spring	2	
48	7WF2-006	Stopper pin	1	
49	36T3-003D2	Screw	3	
50	36T5-008E1	Feed cam	1	
51	4WF2-009A1	Link	1	
52	2KT3-010	Adjusting link	1	
53	82T2-003C1a10-1	Pin	1	
54	36T5-008E4H02	Link	2	
55	36T5-008E5	Screw	1	
56	36T5-008E4H01	Link	2	
57	82T2-003C1a10-2	Pin	1	
58	36T5-008E7	Screw	1	
59	36T5-008E8	Screw	1	
60	36T5-008E9	Eccentric shaft	1	
61	36T5-008E10	Adjusting crank	1	
62	5WF1-002	Position pin(left)	1	
63	22T6-008D3	Screw	2	
64	5WF1-001	Position pin(right)	1	
65	7WF2-005	Push lever	1	
66	36T5-011	Spring	1	
67	36T3-003D1	Feed dog lift cam	1	
68	36T3-003D2	Screw	2	
69	36T3-004	Separator	1	
70	22T3-009D1C	Link	1	
71	2KT3-008	Spring	1	
72	2KT3-009	Pin	1	
73	2KT3-006	Stopper pin	1	
74	2KT3-004	Reverse stitching plate	1	
75	2KT3-005	Screw	1	

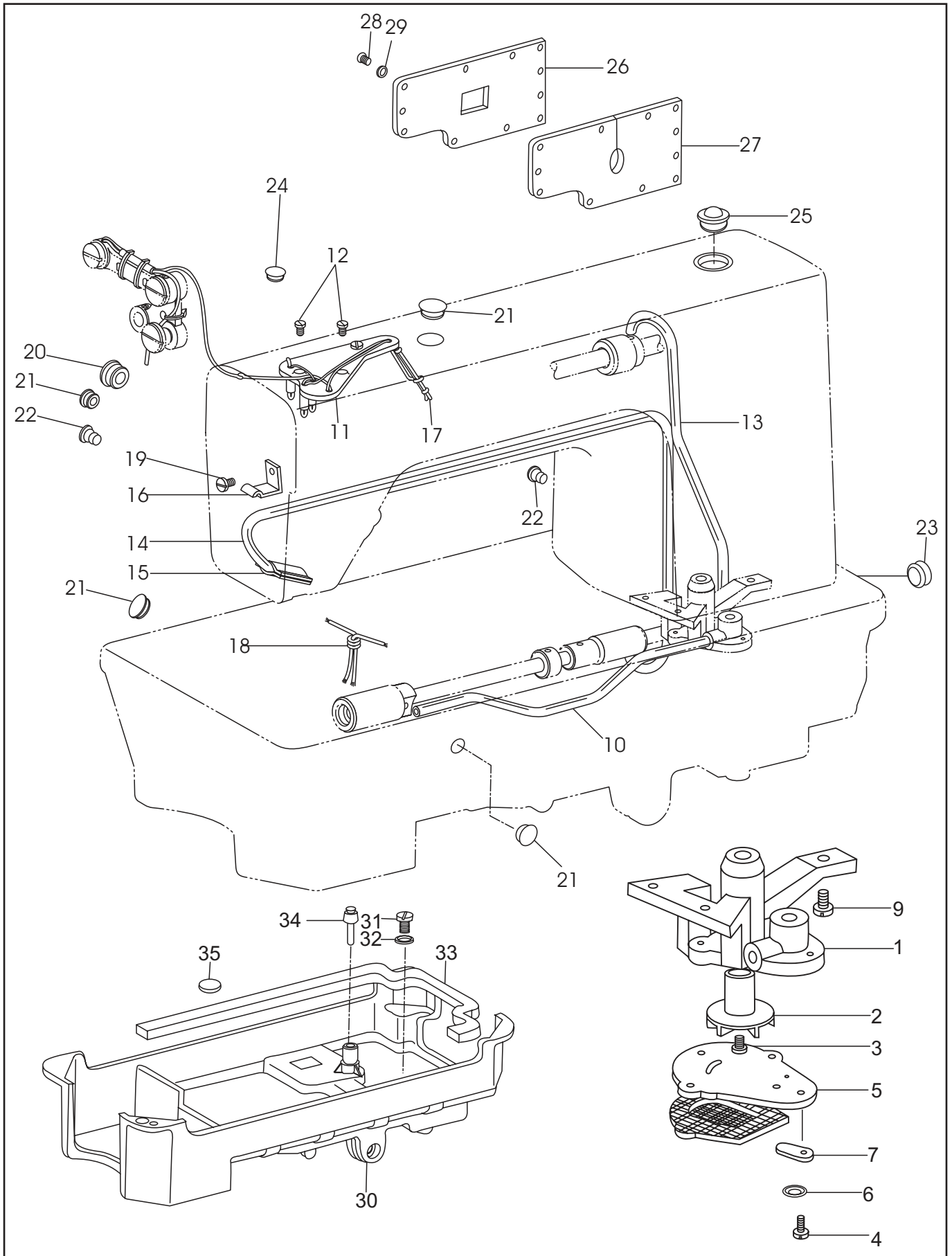
5. Rotating hook mechanism



5. Rotating hook mechanism

No .	Parts No .	Name of parts	Qty.	Remarks
1	15WF1-001	Vertical shaft	1	
2	22T3-010E2a1-2	Bevel gear	1	
3	22T2-005B3	Screw	8	
4	22T3-010E2a2-2	Bevel gear(up)	1	
5	22T3-010E2b1-2	Bevel gear	1	
6	22T3-010E2b2-2	Bevel gear(down)	1	
7	4WF1-003	Bushing(up)	1	
8	2KT-008	Bushing(down)	1	
9	J0.0.40	Screw	2	
10	151845001	Bobbin case assembly	1	
11	2KT1-014	Bobbin case	1	
12	159793901	Rotating hook assembly	1	
13	2KT1-012	Lower shaft	1	
14	22T4-001A1a2	Filter	1	
15	22T4-001A1a1	Screw	1	
16	2KT1-011	Front bushing	1	
17	22T4-005	Screw	1	
18	22T4-006	Spring	1	
19	22T4-002B1	Collar	1	
20	J0.0.35	Screw	2	
21	4WF1-004	Bushing	1	
22	22T1-013	Screw	1	
23	36T4-015	Plunger	1	
24	36T4-016	Spring	1	
25	22T4-010	Retainer	1	
26	22T8-009	Screw	1	
27	2KT1-013	Position hook	1	
28	22T4-015	Screw	1	
29	2KT1-010	Middle bushing	1	
30	2KT1-009	Mat	1	

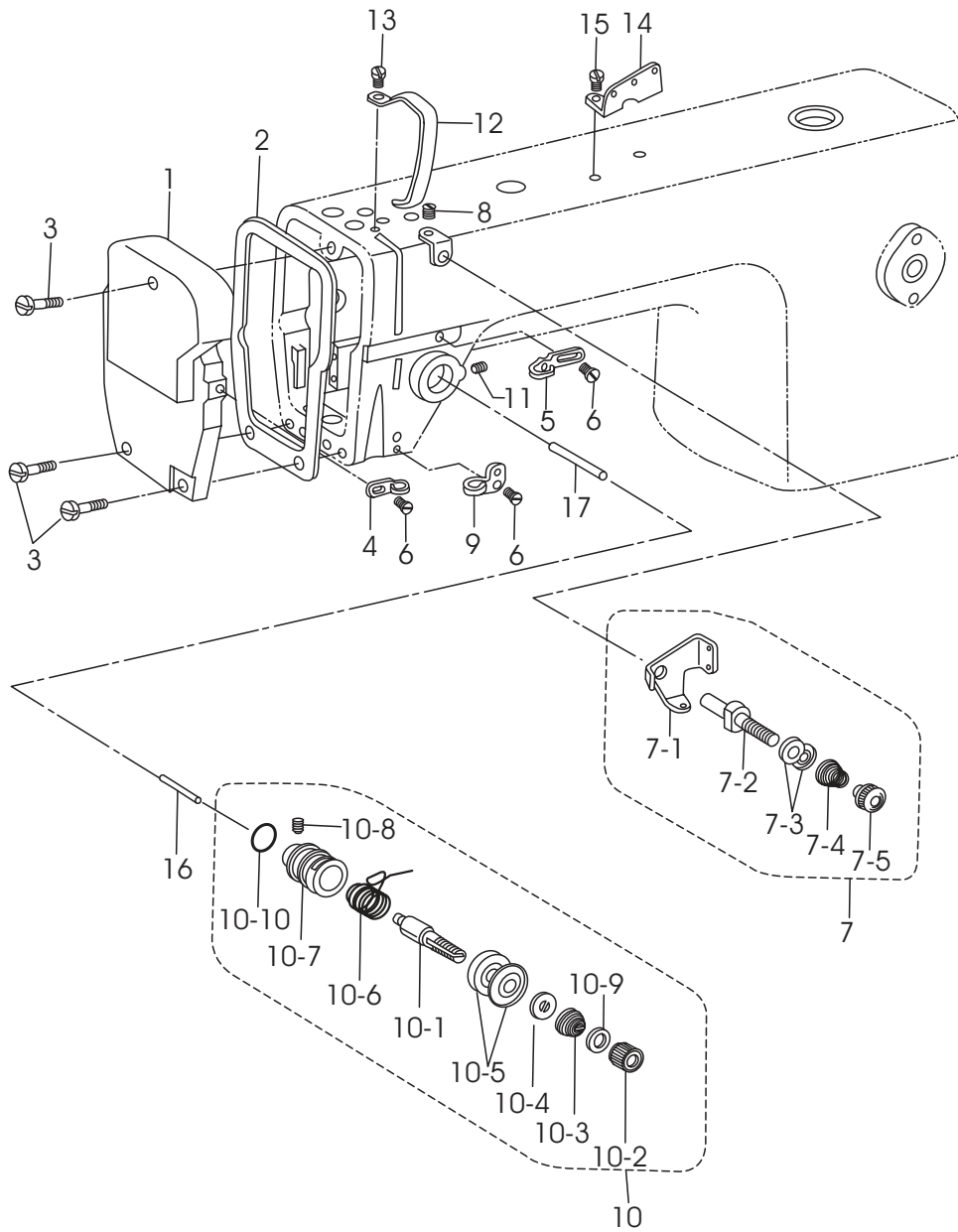
6.Lubrication



6.Lubrication

No .	Parts No .	Name of parts	Qty.	Remarks
1	15WF4-003	Oil pump	1	GB67-85
2	15WF4-006	Big gear	1	
3	15WF4-007	Small gear	1	
4		Screw	1	
5	22T8-005	Washer	1	
6	15WF4-004	Cover	1	
7	22T8-007	Adjusting plate	1	
8	22T8-008A	Filter assembly	1	
9	22T8-009	Screw	3	
10	22T2-009	Oil tube assembly	1	
11	7WF4-016	Setting plate assembly	1	
12	22T8-012	Screw	2	
13	22T8-013D	Oil tube assembly	1	
14	22T8-014	Tube assembly	1	
15	22T8-015	Felt	1	
16	22T8-016	Clamp	1	
17		Oil wick(up)	1	
18		Oil wick(down)	1	
19	22T8-004	Screw	1	
20	22T1-003C3	Rubber plug	1	∅19
21	22T1-003C4	Rubber plug	4	∅11.8
22	22T1-015	Rubber plug	2	∅8.8
23	22T1-016	Rubber plug	1	∅27
24	22T1-017	Rubber plug	1	∅5.7
25	22T1-018	Oil screen	1	
26	22T1-005D1	Rear cover	1	
27	22T1-005D2	Seal gasket	1	
28	22T1-006	Screw	8	
29	22T1-007	Washer	8	
30	2KT9-001	Oil reservoir	1	
31	22T9-001A2	Screw	1	
32	22T9-001A3	Washer	1	
33	1KT5-003	Gasket	1	
34	22T9-003B1	Knee lifter prop bar	1	
35	22T9-013	Magnet	1	

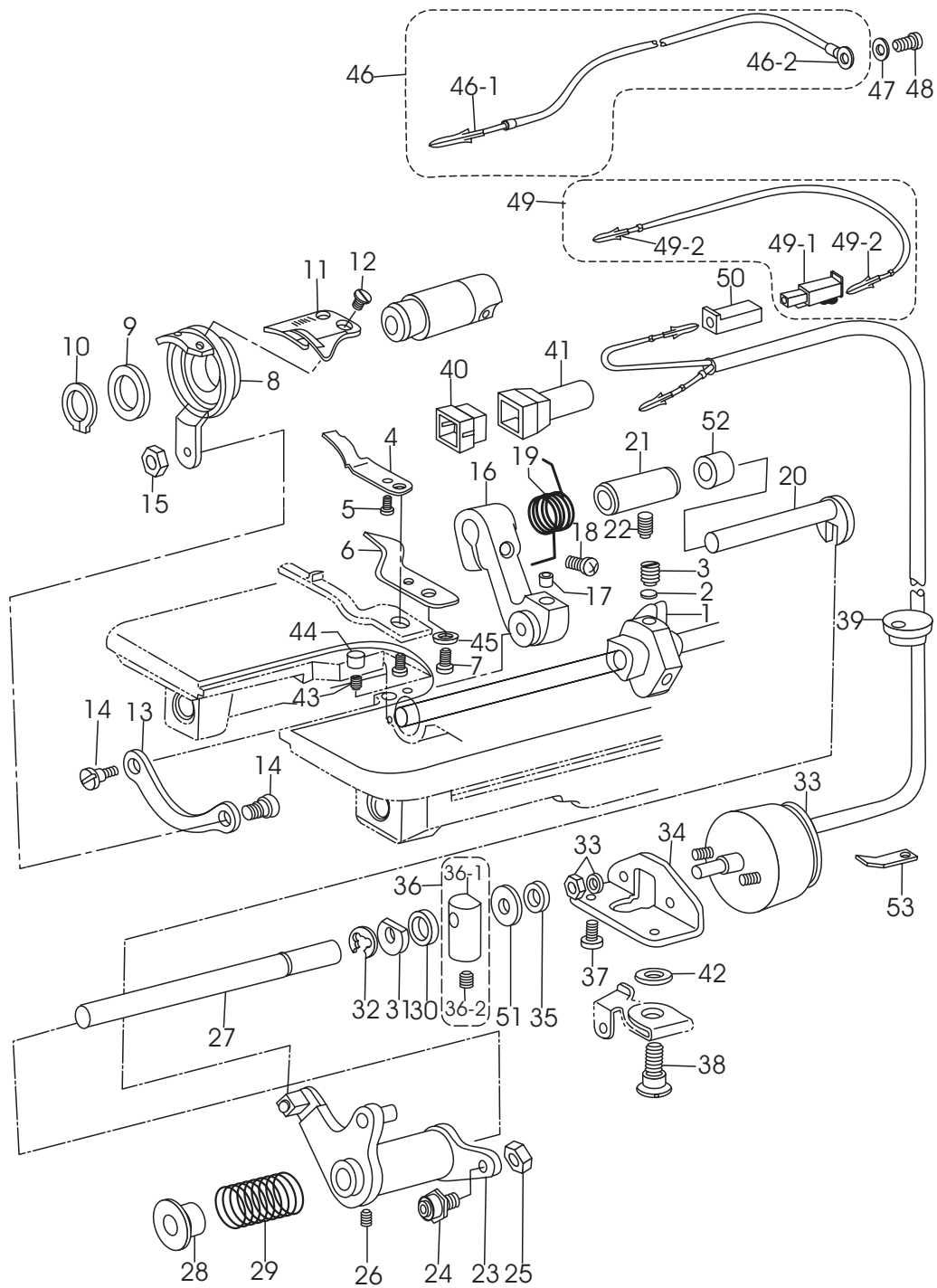
7.Thread guide mechanism



7.Thread guide mechanism

No .	Parts No .	Name of parts	Qty.	Remarks
1	14WF4-003A1	Face plate	1	
2	14WF4-004	Spacer	1	
3	22T1-004	Screw	3	
4	22T1-003C5	Thread guide	1	
5	22T1-014	Thread guide	1	
6	22T1-003C6	Screw	3	
7	36T2-006D	Thread tension disc assembly	1	
7-1	36T2-006D1	Thread guide	1	
7-2	36T2-006D2	Screw	1	
7-3	22T1-009E3	Thread tension disc	2	
7-4	2KT2-011	Spring	1	
7-5	36T2-006D4	Nut	1	
8	22T1-011	Screw	1	
9	7WF4-015	Thread guide	1	
10	22T1-012F	Thread tension plate assembly	1	
10-1	22T1-012F1	Screw	1	
10-2	22T1-012F2	Nut	1	
10-3	33T4-008C1	Spring	1	
10-4	22T1-012F4	Thread releasing disc	1	
10-5	22T1-012F5	Thread tension disc	2	
10-6	22T1-012F6	Thread take-up spring	1	
10-7	22T1-012F7	Thread tension bracket	1	
10-8	22T1-012F8	Screw	1	
10-9	22T1-012F9	Stop plate	1	
10-10	22T1-012F10	O-type ring	1	
11	22T1-013	Screw	1	
12	1KT1-003	Safety guard	1	
13	22T2-004	Screw	1	
14	36T2-004	Thread guide	1	
15	36T2-005	Screw	1	
16	3KT4-002	Thread releasing pin	1	
17	2KT4003	Thread releasing stud	1	

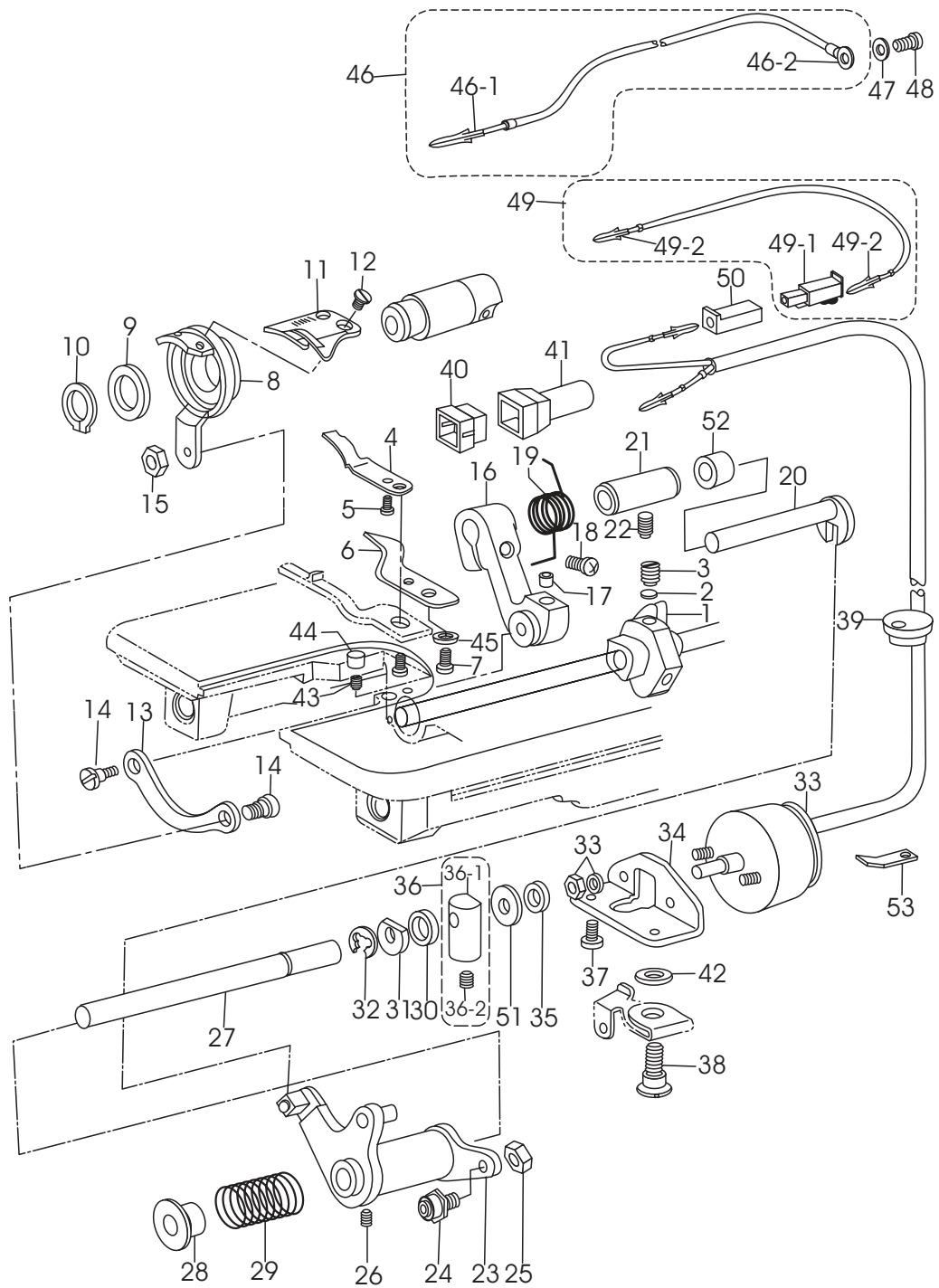
8.Thread trimmer mechanism



8.Thread trimmer mechanism

No .	Parts No .	Name of parts	Qty.	Remarks
1	2KT5-030	Thread trimmer cam	1	
2	2KT5-032	Spacer	2	
3	2KT5-031	Screw	2	
4	2KT5-001	Fixed knife	1	
5	2KT5-002	Screw	1	
6	2KT5-004	Thread guide	1	
7	2KT5-005	Screw	1	
8	2KT5-008	Movable knife bracket	1	
9	2KT5-009	Spacer	1	
10		Washer	1	GB894.1-86-18
11	2KT5-006	Movable knife	1	
12	2KT5-007	Screw	2	
13	2KT5-010	Thread trimmer link	1	
14	2KT5-011	Screw	2	
15	2KT5-013	Screw	1	
16	2KT5-012	Thread trimmer crank	1	
17	2KT5-014	Plug	1	
18	2KT5-015	Screw	1	
19	2KT5-016	Spring	1	
20	2KT5-019	Forked shaft	1	
21	2KT5-017	Bushing	1	
22	2KT5-018	Screw	1	
23	2KT5-024	Thread trimmer cam crank assembly	1	
24	2KT5-025	Roller assembly	1	
25	2KT5-026	Nut	1	
26	2KT5-027	Screw	1	
27	2KT5-021	Thread trimmer shaft	1	
28	2KT5-022	Stopper bushing	1	
29	2KT5-023	Spring	1	
30	2KT5-029	Spacer	1	
31	2KT5-028	Spacer	1	
32		Spilt retainer	1	GB896-86-6
33	2KT5-033	Thread trimmer solenoid assembly	1	
34	2KT5-034	Set bracket	1	
35	2KT5-038	Cushion	1	
36	2KT5-036	Solenoid bell assembly	1	
36-1	2KT5-036a	Bell	1	
36-2	2KT5-036b	Screw	1	
37	2KT5-035	Screw	1	
38	2KT4-018	Screw	1	
39	2KT5-041	Cord bushing	1	
40	2KT8-002	Connector plug	1	

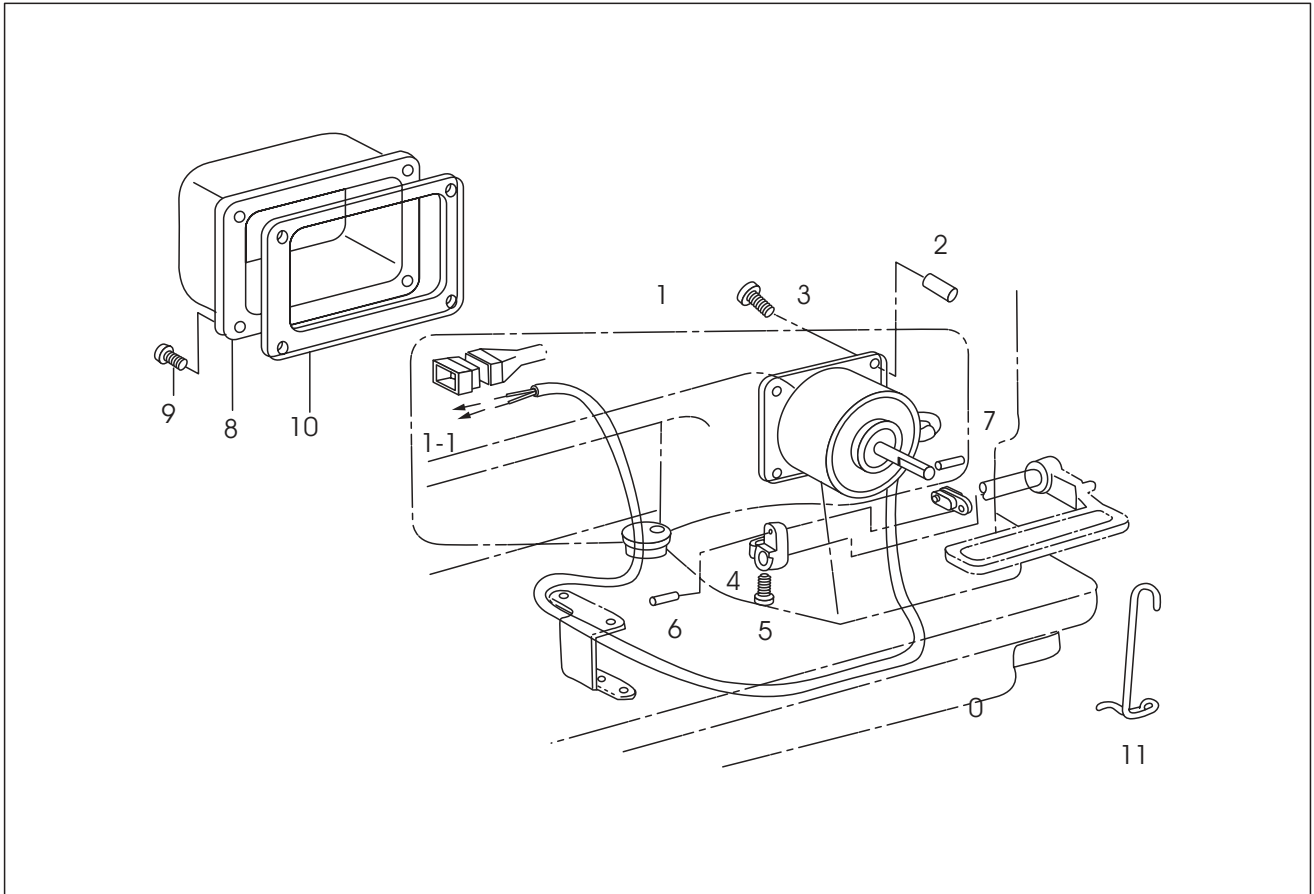
8.Thread trimmer mechanism



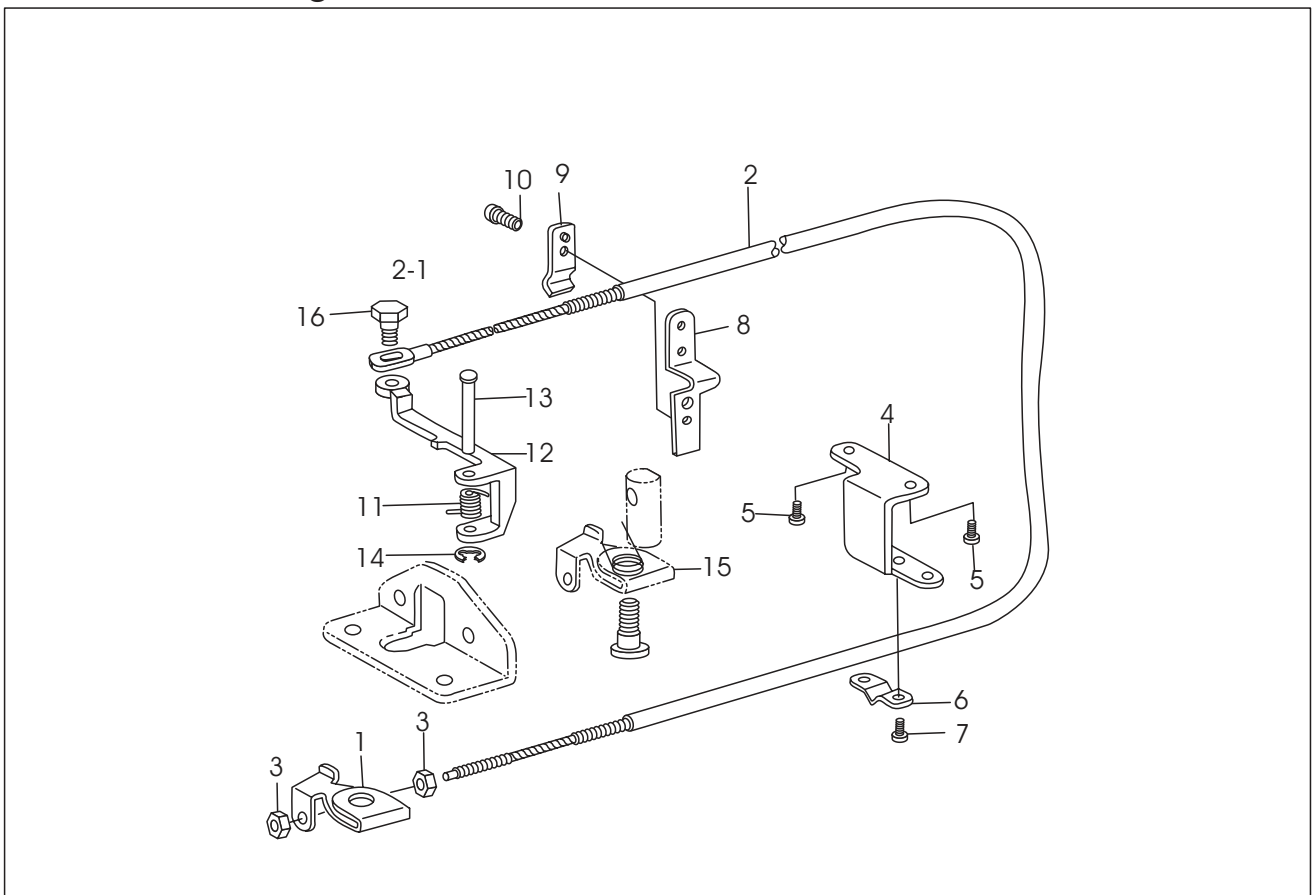
8.Thread trimmer mechanism

No .	Parts No .	Name of parts	Qty.	Remarks
41	2KT8-003	Connector cover	1	
42	2KT4-021	Spacer	1	
43	2KT5-003	Screw	1	
44		Rubber plug	1	
45		Spacer	1	
46	2KT8-001	Ground wire assembly	1	
46-1	2KT8-001b	Terminal pin	1	
46-2	2KT8-001c	Terminal	1	
47		Spacer	1	GB93-84-4
48	2KT6-017	Screw	1	
49	2KT6-018	Wire assembly	1	
49-1	2KT6-018b	Connector	2	
49-2	2KT6-018a	Terminal pin	1	
50	2KT6-019	Connector	1	
51	2KT5-037	Spacer	1	
52	2KT5-020	Collar	1	
53	2KT5-039	Cord holder	1	

9.Reverse mechanism



10.Tension releasing mechanism



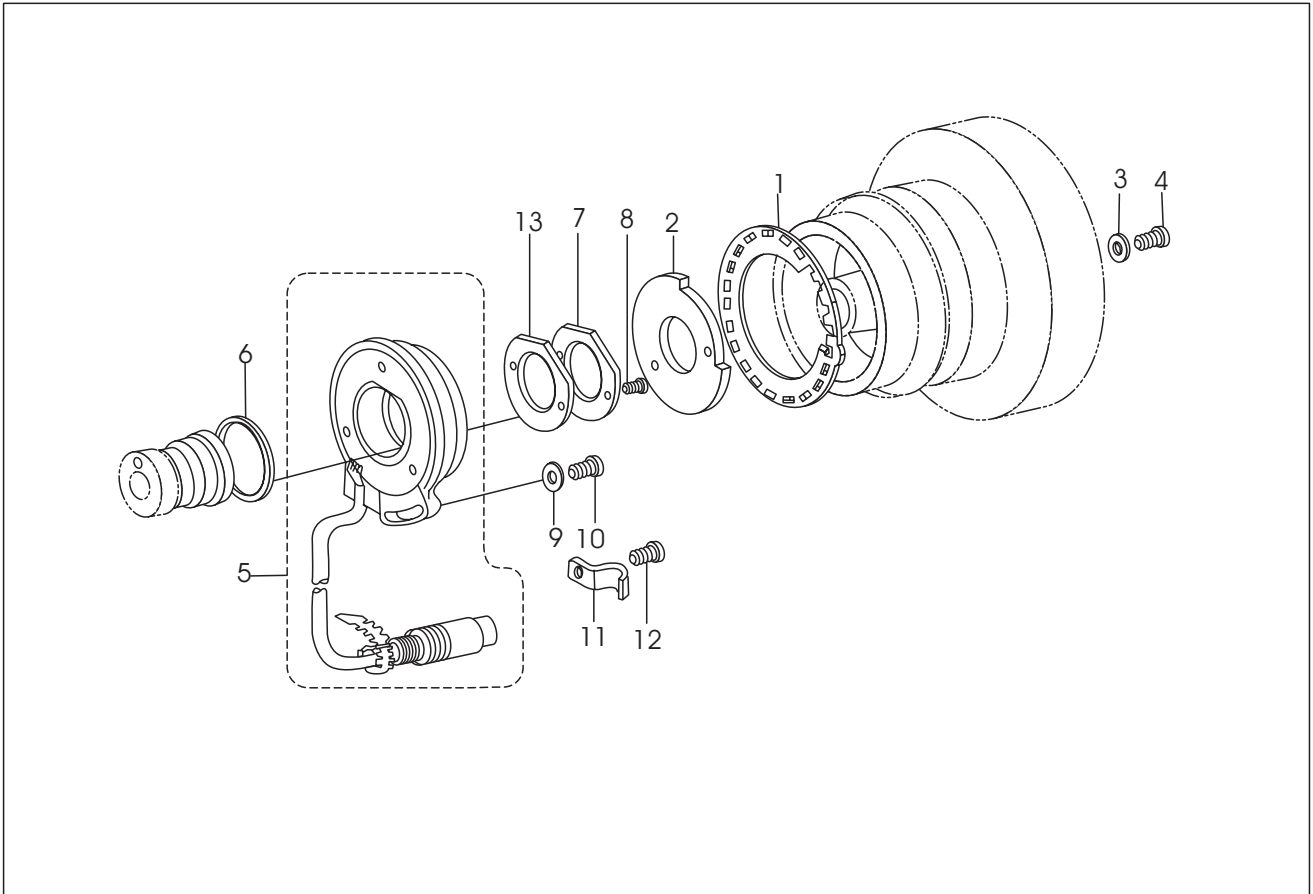
9.Reverse mechanism

No .	Parts No .	Name of parts	Qty.	Remarks
1	2KT6-001	Reverse solenoid assembly	1	
1-1	2KT6-001c	Terminal pin	2	
2	2KT6-006	Spacer collar	4	
3	2KT6-007	Screw	4	
4	2KT6-004	Crank	1	
5	2KT6-005	Screw	1	
6	2KT6-003	Link pin	1	
7	2KT6-002	Connecting link	1	
8	2KT6-008	Solenoid cover	1	
9	2KT6-010	Screw	1	
10	2KT6-009	Spacer	4	
11	2KT6-011	Spring hook	1	
			1	

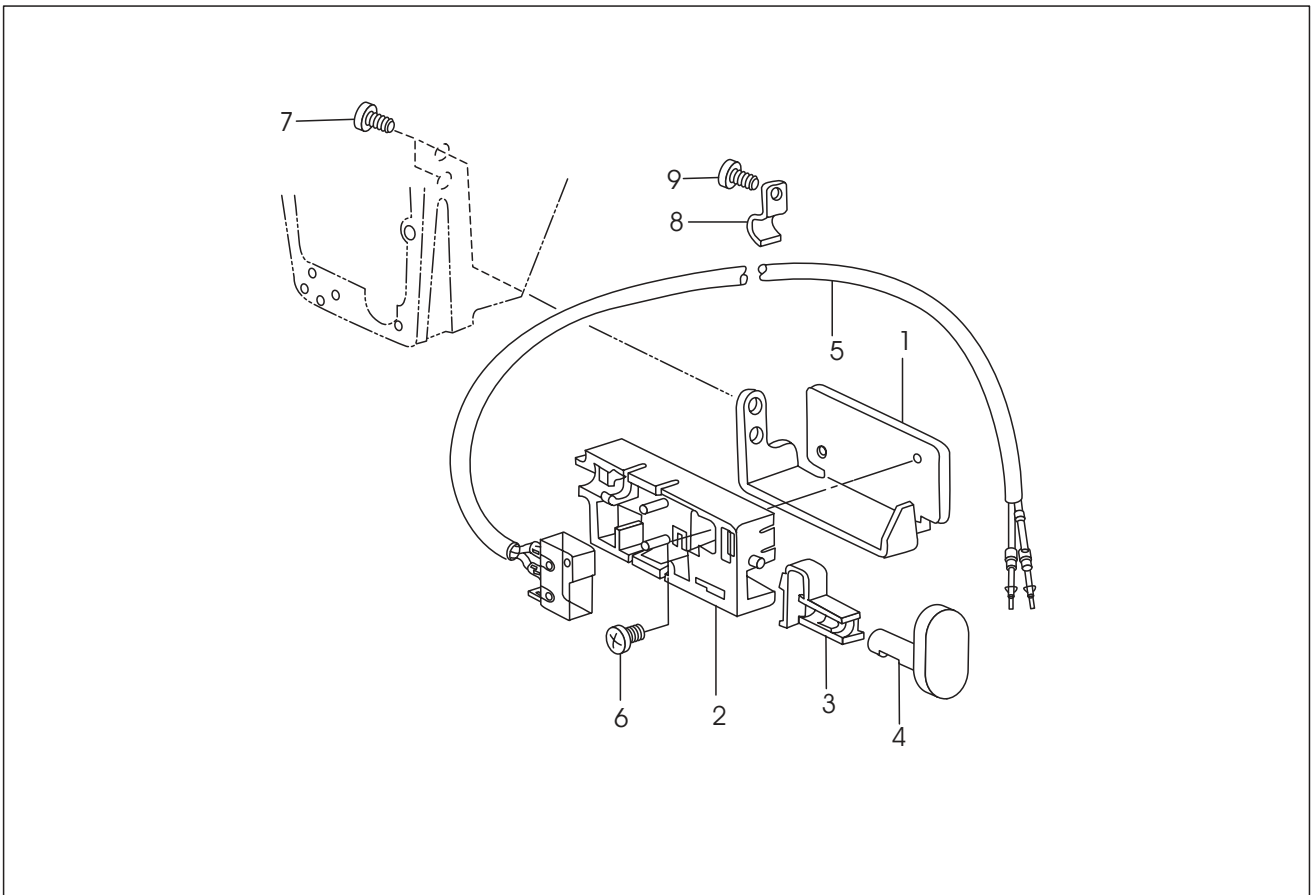
10.Tension releasing mechanism

No .	Parts No .	Name of parts	Qty.	Remarks
1	2KT4-017	Tension releasing set bracket	1	
2-1	2KT4-007	Wire	1	
3	2KT4-008	Wire joint	1	
4	2KT4-020	Nut	2	
5	2KT4-014	Set bracket	1	
6	2KT4-015	Screw	2	
7	2KT4-016	Set plate	1	
8	2KT4-013	Screw	3	
9	2KT4-010	Set bracket	1	
10	2KT4-012	Wire holder	1	
11	2KT4-011	Screw	2	
12	2KT4-006	Spring	1	
13	2KT4-004	Hinge	1	
14	2KT4-005	Hinge pin	1	
15	2KT4-019	Split retainer	1	
16	2KT4-009	Spring	1	GB896-86-2
		Screw	1	
			1	

11.Synchronizer



12.Reverse switch mechanism



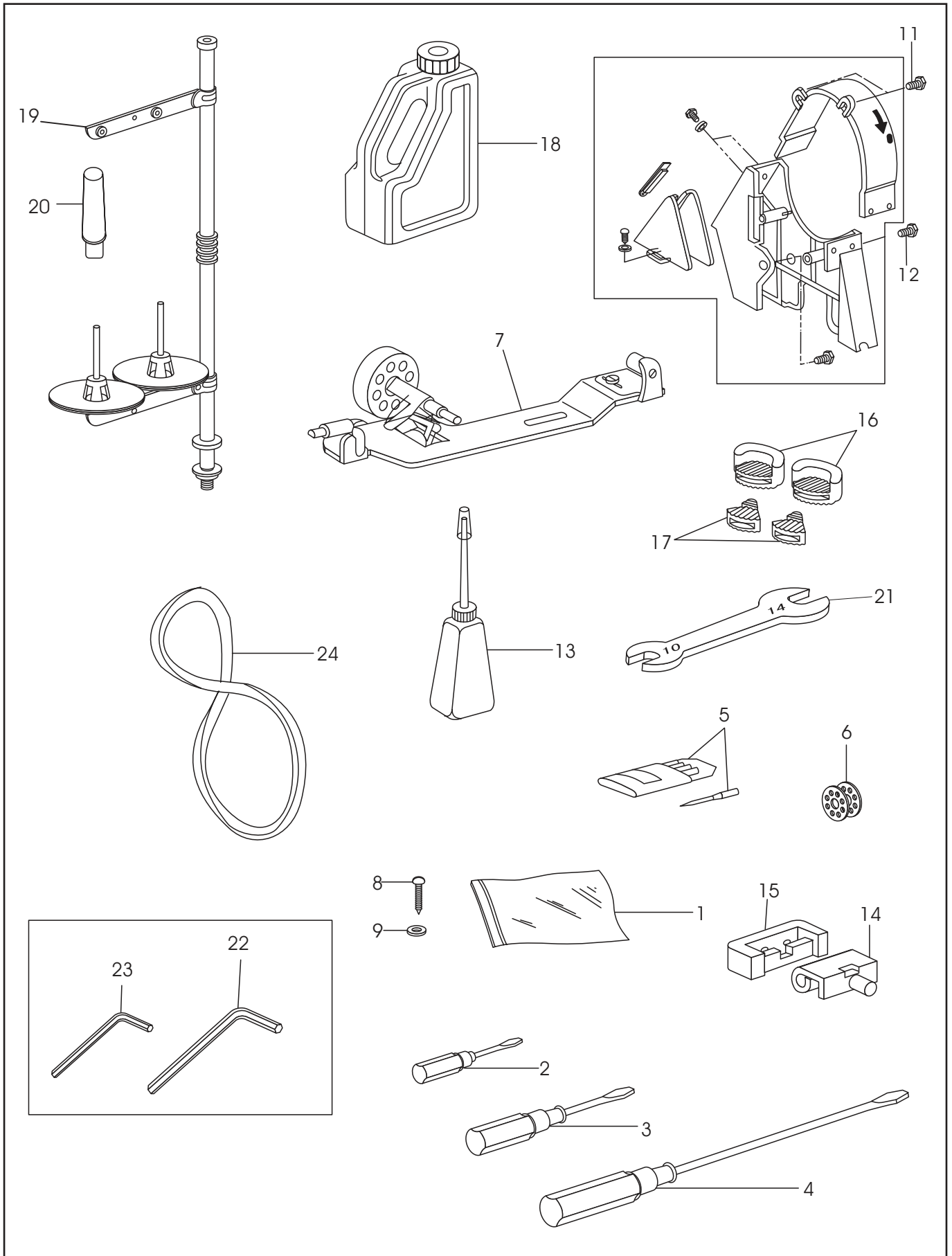
11.Synchronizer

No .	Parts No .	Name of parts	Qty.	Remarks
1	2KT7-006	Instruction plate	1	
2	2KT7-007	Plate	1	
3	2KT7-009	Washer	2	
4	2KT7-008	Screw	2	
5	2KT7-001	Synchronizer	1	
6	2KT7-002	Ring	1	
7	2KT7-003	Support	1	
8	2KT7-005	Screw	2	
9	2KT7-011	Spacer	1	
10	2KT7-010	Screw	1	
11	2KT7-040	Cord holder	1	
12	2KT7-017	Screw	1	
13	2KT7-004	Support packing	1	

12.Reverse switch mechanism

No .	Parts No .	Name of parts	Qty.	Remarks
1	2KT6-011	Set bracket	1	
2	2KT6-013	Switch bracket	1	
3	2KT6-015	Switch	1	
4	2KT6-014	Spring	2	
5	2KT6-016	Reverse swith assembly	1	
6		Screw	1	GB896-86-2
7	2KT6-012	Screw	2	
8	2KT5-040	Cord holder	1	
9	2KT6-017	Screw	1	

13. Accessories



13.Accessories

No .	Parts No .	Name of parts	Qty.	Remarks
1	33TF-0102	Accessory bag	1	
2	33TF-014	Screw driver(small)	1	
3	33TF-013	Screw driver(medium)	1	
4	33TF-012	Screw driver(big)	1	
5		Needle	1	(DP 17#20)
6	2KT1-014	Bobbin	3	
7	S14420020	Bobbin winder assembly	1	
8	33TF-017	Wood screw	2	
9	33TF-018	Washer	2	
10	1KT6-001	Belt cover	1	
11		Screw	2	GB67-85
12		Screw	2	BG67-85
13	33TF-011	Oil pot	1	
14	33T1-004	Hinge	2	
15	22T9-007F2	Rubber cushion	2	
16	22T9-009	Head cushion(big)	2	
17	22T9-010	Head cushion(small)	2	
18	1F-012	Oil reservoir	1	
19	S14420020	Spool stand	1	
20		Bed leg	1	
21		Wrench	1	
22	2KT9-006	Hexagonal wrench(2mm)	1	
23	2KT9-007	Hexagonal wrench(3mm)	1	
24	7F-001	V-belt	1	O 1041